

# REDISTRICTING ROCKY MOUNT WARDS

Wed, Aug 3, 2011 at 4:44 PM

## **REDISTRICTING INFORMATION - UPDATED 8/3/2011**

-  
Representative Bryant is looking to provide constituents with as much up to date information as possible regarding the redistricting process. The information that follows attempts to represent the most current statistics, maps, and contact information available. We will continuously update this information as more is gathered. If you have any questions/concerns/comments, please contact Karon Hardy at [919-733-5878](tel:919-733-5878) or by email at [bryantla@ncleg.net](mailto:bryantla@ncleg.net).

-  
**The City of Rocky Mount Public Hearing will be held on Monday, August 8, 2011 at 7:00 p.m. in the George W. Dudley City Council Chamber of the Frederick E. Turnage Municipal Building to receive public comment on the proposed new ward map.**

### **Rocky Mount**

#### *Contacts:*

Charles Penny (City Manager): [12529721325](tel:12529721325)

*Status:* The plans are posted on the city website <http://www.rockymountnc.gov/wardchanges.html> ; Public Hearing has been scheduled for Monday, Aug. 8, 2011. Council elections have been postponed until May 2012. Rocky Mount will be using demographer Don Johnson from Atlanta.

#### **Statistics For Current CityWards**

*Statistics Provided by Southern Coalition for Social Justice (Contact: Jessica Holmes ([919-323-3380](tel:919-323-3380), ext. 154)- Current Districts*

District Stats



District Report:  
Rocky Mount Wards (Current)

District	Name
1	Knight
2	Blackwell
3	Wiggins
4	Watkins
5	Rogers
6	Bullock
7	Miller

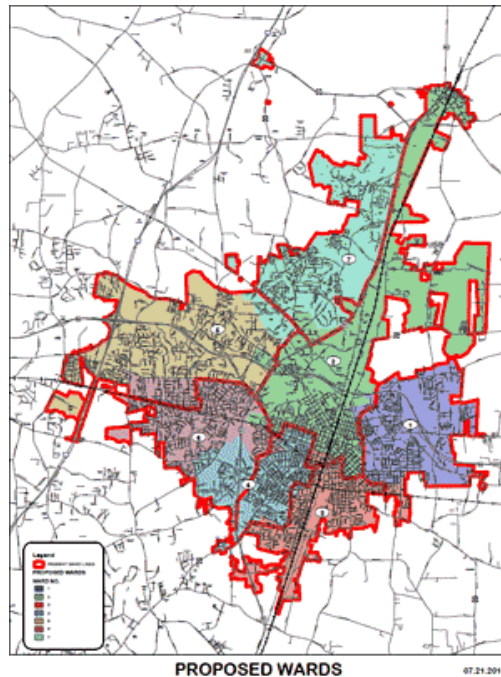
Current Districts						
District	Pop	Deviation	% Deviation	Hisp VAP	%Hisp VAP	
1	8474	263	3.20%	60	0.99%	
2	7677	-534	-6.50%	85	1.42%	
3	6983	-1228	-14.96%	55	1.08%	
4	6937	-1274	-15.52%	95	1.87%	
5	10924	2713	33.04%	359	4.26%	
6	7920	-291	-3.54%	202	3.32%	
7	8562	351	4.27%	444	6.72%	

District	NH_White VAP	%NH_White VAP	NH_Black VAP	%NH_BI VAP
1	549	9.09%	5369	88.89%
2	1536	25.73%	4193	70.25%
3	733	14.35%	4259	83.40%
4	1100	21.62%	3794	74.57%
5	4367	51.76%	3385	40.12%
6	4211	69.28%	1537	25.29%
7	3016	45.66%	2886	43.69%

**NEW PROPOSED WARD DEMOGRAPHICS**

Ward #	1	2	3	4	5	6	7
Total Population	7909	7994	8047	7914	8624	8622	8540
Deviation from Ideal Ward	-327	-242	-189	-322	+388	+386	+304
% Deviation from Ideal Ward	-3.97	-2.94	-2.29	-3.91	+4.71	+4.69	+3.69
White Population	543	1966	1008	1677	3866	5855	3799
% White Pop.	6.87	24.59	12.53	21.19	44.83	67.91	44.48
Black Population	7145	5598	6805	5864	3885	2177	3662
% Black Pop.	90.34	70.03	84.57	74.1	45.05	25.25	42.88
Population Age 18 and Over	5621	6177	5956	5773	6551	6714	6660
% Pop. Age 18 and Over	71.07	77.27	74.02	72.95	75.96	77.87	77.99
White Pop. Age 18 and Over	469	1650	890	1440	3199	4738	3209
% White Pop. Age 18 and Over	8.34	26.71	14.94	24.94	48.83	70.57	48.18
Black Pop. Age 18 and Over	5042	4242	4922	4112	2796	1609	2745
% Black Pop. Age 18 and Over	89.7	68.67	82.64	71.23	42.68	23.96	41.22
Total Registered Voters	5843	5570	5760	5870	6207	6722	6014
% Registered Voters	73.88	69.68	71.58	74.17	71.97	77.96	70.42
White Registered Voters	730	1386	1052	1744	3935	4693	3247
% White Registered Voters	12.49	24.88	18.26	29.71	63.4	69.82	53.99
Black Registered Voters	5010	3993	4570	3977	2072	1799	2468
% Black Registered Voters	85.74	71.69	79.34	67.75	33.38	26.76	41.04
Male Registered Voters	2427	2385	2398	2442	2713	3000	2732
% Male Registered Voters	41.54	42.82	41.63	41.6	43.71	44.63	45.43
Female Registered Voters	3418	3120	3315	3410	3489	3686	3250
% Female Registered Voters	58.5	56.01	57.55	58.09	56.21	54.83	54.04

**CITY PROPOSES CHANGES TO COUNCIL WARD MAP**



[Click here to view a larger version](#)

Citizens of Rocky Mount are represented in city government by a Mayor (elected at-large) and a seven member City Council (representing seven distinct wards). For fairness and equal representation, each ward should ideally include one-seventh of the total city population. However, when comparing Rocky Mount's 2010 population data with the most recent ward map (drawn in 2000), it became apparent that the current wards were malapportioned. In 2010, the city's total population was determined to be 57,580 people; therefore, an ideal ward size would be one-seventh of that figure, or approximately 8,226 residents. In order for the citizens of Rocky Mount to have equal representation on the City Council, the ward map must be redrawn.

The Rocky Mount City Council will consider a proposed map containing new ward boundaries (shown at right - click to view a larger version). The Rocky Mount City Council will hold a public hearing to receive public comments about the new ward map during their regular meeting at 7:00 pm on Monday, August 8, 2011 in the City Council Chamber at City Hall.

The proposed Ward Map was created using data from the US Census Bureau and the Board of Elections of North Carolina. The proposed Ward Map takes into account Section V of the Voting Rights Act and is not retrogressive to the 2000 plan.

---